



WHALEFIELD

MOUNTAIN ESTATE



www.whalefield.co.nz



WHALEFIELD

MOUNTAIN ESTATE

An unsurpassed Mountain Lifestyle

Something really special is taking shape on the southern foothills of Mount Ruapehu.

Located within minutes of Ohakune township, Tongariro National Park and the fast developing Turoa Ski area, the exhilarating alpine lifestyle of Whalefield Mountain Estate promises to capture the heart of anyone with adventure, flair & fortitude in their blood.

"Wig" Whale's Legacy

Whalefield Mountain Estate was founded with foresight. Ohakune pioneer "Wig" Whale and successive generations of the Whale family were part of a small community that for many years painstakingly forged a road up the southern mountain slopes of Mount Ruapehu. This road made the dream of transforming Ohakune into a vibrant ski town a reality.

Prospective owners of Whalefield Mountain Estate are today the beneficiaries of that long-held vision and unbending determination.

Key features

Whalefield Mountain Estate has been crafted with a generous spirit. Unimpeded views, expansive sites, protective covenants, a private gated entry, hedge-row planting, post and rail fencing, bollard lighting, attractive water features and a body corporate set up to maintain your section, are just some of the well thought-out details that make this Mountain Estate so desirable.

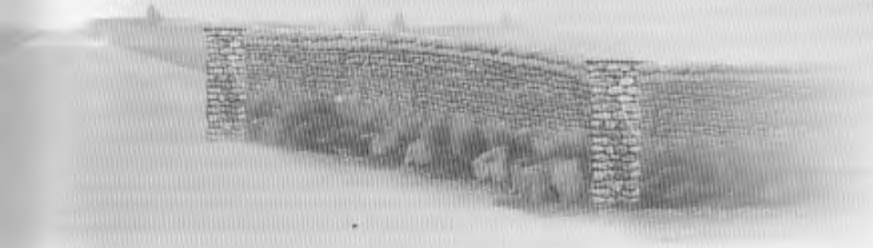
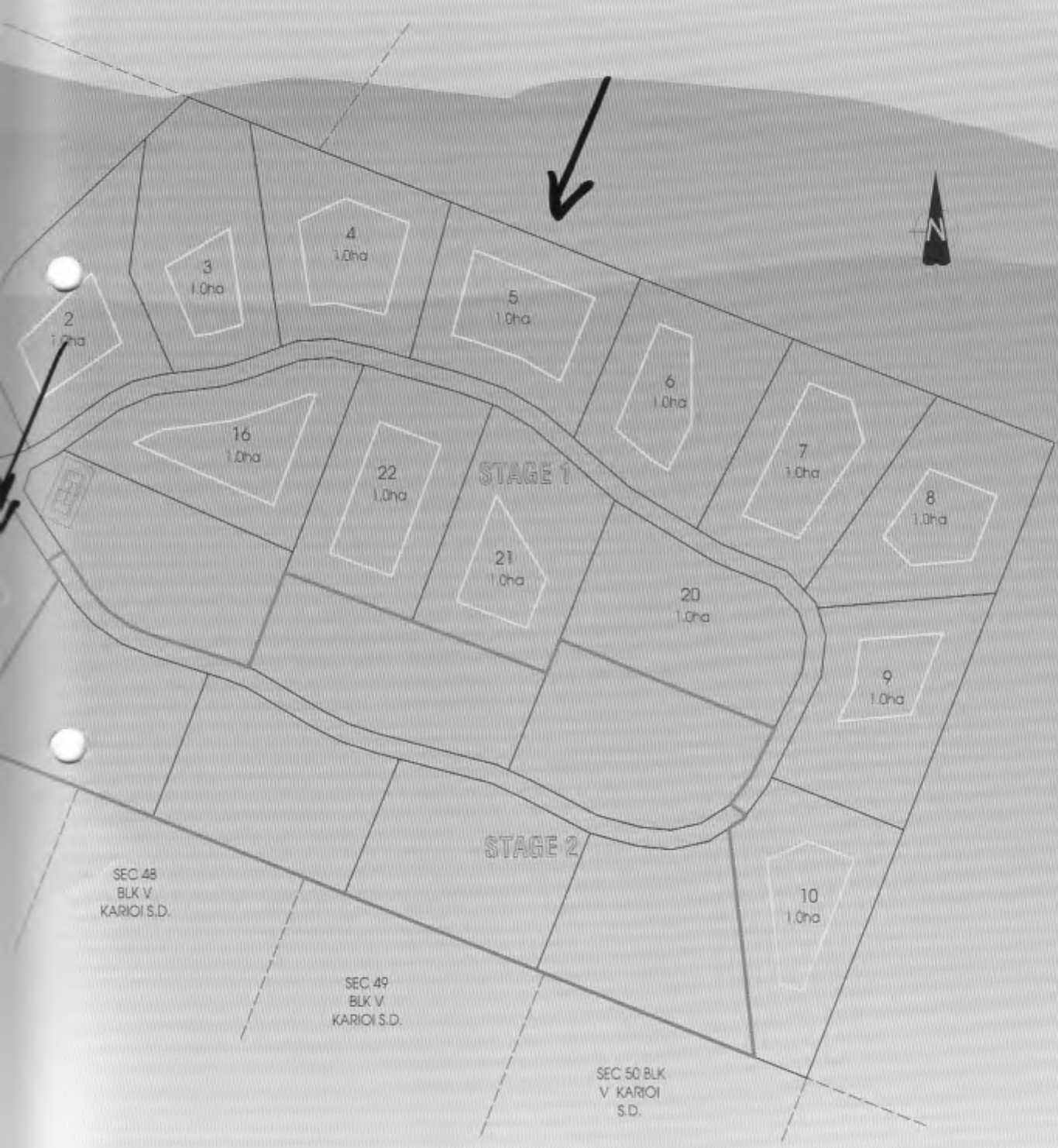
As close as it gets...

Up here at the gateway to a World Heritage National Park there's a fine line between heaven and earth. With a sense of privacy, security and exclusivity all year round, your elegant mountain retreat is certain to become your cherished home-away-from-home.



Whalefield Entrance Concept:



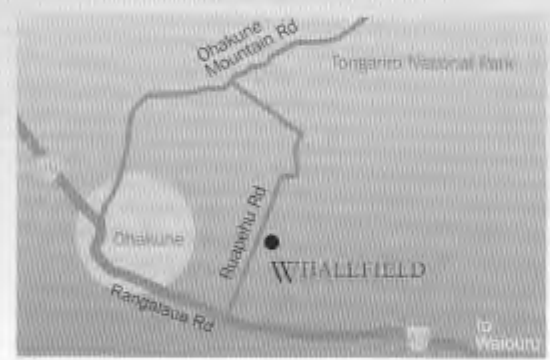
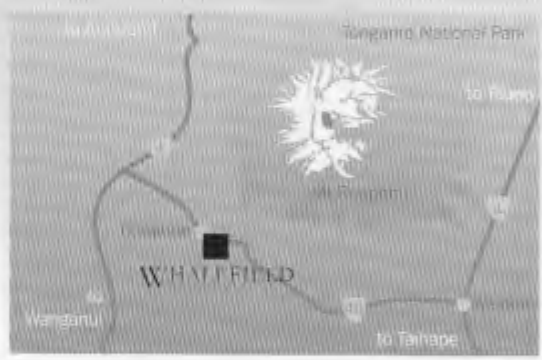


The determined spirit that created the mountain road lives on at Whalefield Mountain Estate.



WHALEFIELD

MOUNTAIN ESTATE



MERLIN BARTLEY
LAND ARCHITECTURE